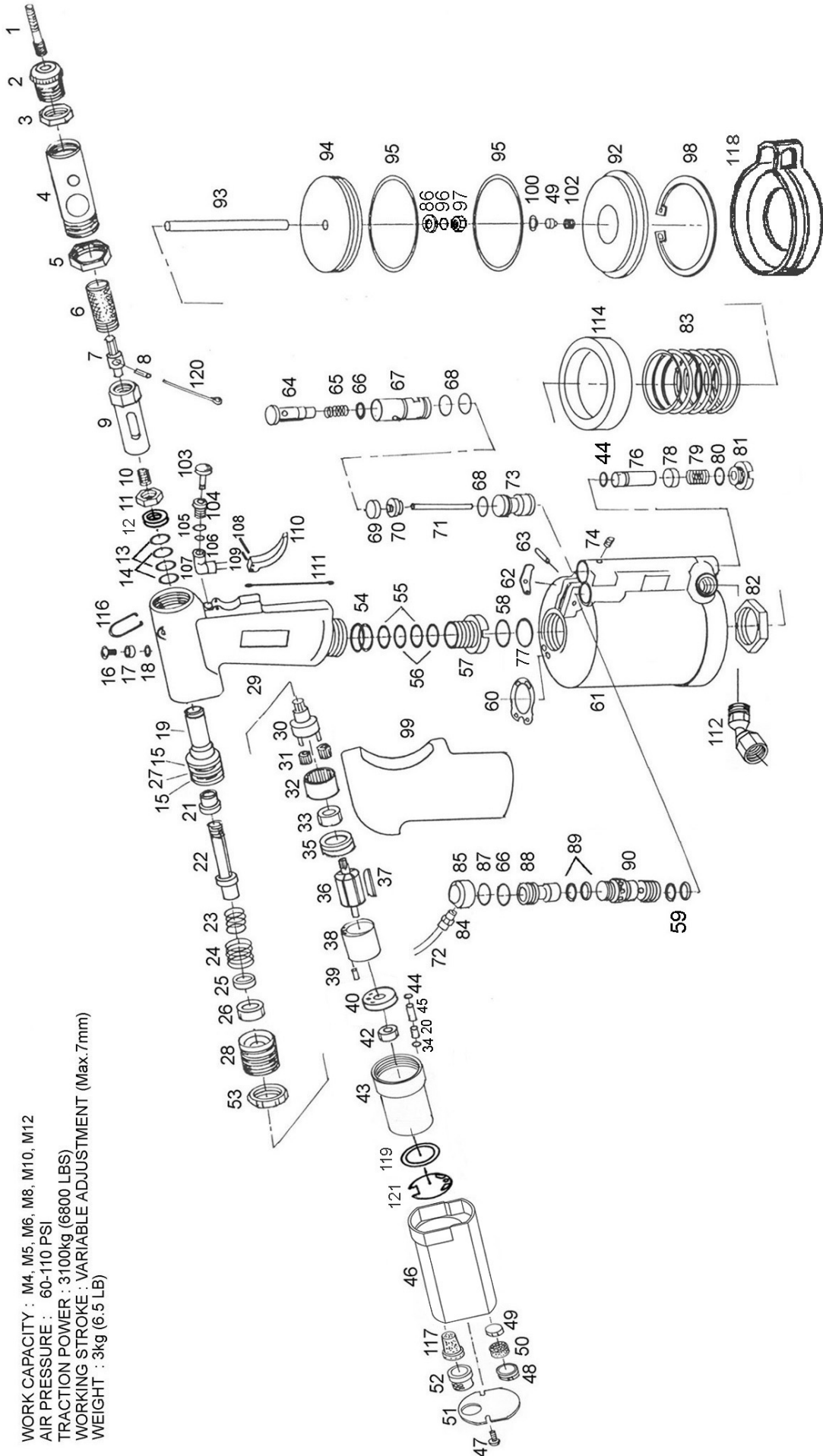


HN6000 Air Hydraulic Rivet Nut Tool (METRIC size BOLT)

1025-30 11/17/06(B1)
(*Three-2)



WORK CAPACITY : M4, M5, M6, M8, M10, M12
 AIR PRESSURE : 60-110 PSI
 TRACTION POWER : 3100kg (6800 LBS)
 WORKING STROKE : VARIABLE ADJUSTMENT (Max.7mm)
 WEIGHT : 3kg (6.5 LB)

HN6000 Air Hydraulic Rivet Nut Tool (METRIC size BOLT)

(*Three-2) 1025-30 11/17/06(B1)

INDEX NO.	PART NO.	DESCRIPTION	FOB ,@US/PC
1	BM10	Bolt M10	2,50
2	60M10	Nut Anvil M10	5,30
3	600021	Nut	1,20
4	600060	Head	10,40
5	600016	Nut	2,50
6	600013A	Adjustable Bushing	6,00
7	600007	Hexagon Bit	4,80
8	600041	Spring Pin	0,70
9	6000082	Bolt Bushing	9,10
10	600076	Spring	1,50
11	600009	Nut	1,50
12	6000M14	Nut Ring	1,00
13	11502	Ring Washer (2)	0,60
14	11554	X-Ring Seal (2)	0,60
15	11501	O-Ring (2)	0,60
16	02171	Oil Plug	0,25
17	400017A	Fill Washer	0,35
18	02197	O-Ring Seal	0,10
19	600012A	Hydraulic Plunger	11,20
20	6000631	Valve Rod (2)	1,20
21	600020B	Bushing	3,65
22	600011B	Shaft	10,40
23	600015	Spring	4,10
24	600045	Spring	4,70
25	600054	Washer Nut	0,80
26	B6000	Ball Bearing	2,08
27	11549	Washer	0,40
28	600051	Screw Bushing	5,70
29	600002	Hydraulic Section	52,00
30	600052	Gear Spindle	4,80
31	600031	Gear (3)	2,60
32	600043	Ring Gear	3,51
33	B608	Ball Bearing	2,00
34	R06X15	O-Ring (2)	0,52
35	600055	Front Plate	3,40
36	82507	Rotor	3,80
37	82115	Blade (4)	0,52
38	85209	Cylinder	2,40
39	25006	Pin	0,14
40	85230	End Plate	1,20
42	25004	Ball Bearing	1,28
43	600061	Motor Housing	5,20
44	11560	O-Ring Seal (3)	0,15
45	600048	Tube (2)	1,20
46	600063	Motor Housing Cover	9,50
47	600047	Screw (2)	0,30
48	600071	Screw Bushing (2)	0,72
49	19312	Rubber plate (3)	0,68
50	600050	Valve Muffler (2)	1,60
51	600064	Valve Plate	0,85
52	600065	Exhaust Cap	0,91
53	600058	Nut	2,50
54	02116	O-Ring Seal (2)	0,20
55	10554	O-Ring Seal (2)	0,40
56	10556	O-Ring Washer (2)	0,40
57	600018	Screw Plug	4,80
58	25022	O-Ring Seal	0,10
59	R10X1	O-Ring (2)	0,16
60	600032	Gasket	1,10
61	600001	Air Cylinder	52,00
62	500034	Trigger Lever	0,64
63	02167	Pin	0,08
64	600023	Valve Stem	2,20
65	10441	Valve Spring	0,15
66	10548	O-Ring Seal (2)	0,12

INDEX NO.	PART NO.	DESCRIPTION	FOB ,@US/PC
67	600022	Valve Bushing	4,70
68	10445	O-Ring Seal (3)	0,08
69	10442	Valve Plate	0,20
70	600027	Valve Plate Washer	1,10
71	600040	Pin	1,20
72	600072	Tube	1,70
73	600026B	Low Valve Bushing	3,00
74	600074	Screw M4	0,40
76	600029	Low Valve Rod	3,70
77	02170	O-Ring Seal	0,12
78	11542	Valve Plate	0,12
79	10544	Valve Pressure Spring	0,15
80	25203	O-Ring	0,12
81	10550	Screw Plug	0,70
82	02121	Lock Nut	0,90
83	600046	Return spring	8,90
84	51058	Tube Connector	2,80
85	600085	Valve Cap	2,60
86	48047	Washer (2)	0,24
87	R123X24	O-Ring	0,27
88	600084	Valve Stem	4,42
89	R9X15	O-Ring (2)	0,40
90	600083	Valve Bush	5,60
92	500035	Air Cylinder Cap	4,80
93	600019	Plunger Rod	5,60
94	500023	Piston Disc	5,15
95	11531	O-Ring Seal (2)	1,32
96	48045	Inner Tooth Washer	0,24
97	48048	Nut	0,40
98	11514	Clip	4,80
99	600099	Hand Grip	3,00
100	19314	Retaining Ring	0,40
102	19313	Spring	0,90
103	600067	Button	1,80
104	600066	Screw Bush	1,80
105	10748	O-Ring Seal	0,20
106	R2X1	O-Ring	0,20
107	600070	Adaptor	4,20
108	02169	Pin	0,10
109	02168H	Pin	0,10
110	02138	Trigger	0,80
111	500033	Trigger Rod	1,00
112	T1020S	Universal Joint	2,40
114	11530	Damping Ring	3,70
117	600096	Muffler Bush	2,40
118	11570	Rubber Cushion	2,20
119	R35X25	O-Ring Seal	0,90
121	600062	Gasket	0,80
*** Accessories ***			
1	BM12	Bolt M12	2,50
1	BM8	Bolt M8	2,00
1	BM6	Bolt M6	2,00
1	BM5	Bolt M5	1,50
1	BM4	Bolt M4	1,50
2	60M12	Nut Anvil M12	5,30
2	60M8	Nut Anvil M8	5,30
2	60M6	Nut Anvil M6	5,30
2	60M5	Nut Anvil M5	5,30
2	60M4	Nut Anvil M4	5,30
3	600021	Nut (5)	1,20
116	54059	Hanging Ring	0,80
120	600069	Pin	1,82
*	W24	Wrench 24/27mm	1,00
*	54005	Hex. Wrench	0,35
*	11790	Oil Syringe	3,40